



FILL-RITE®

A GORMAN-RUPP COMPANY

PRECISION METER TECHNICAL DATA SHEET

MODELS: TS15AF14, TS15AF16, TS15AF64

TS15AF63, TS15AF66

ELECTRONIC FLOW METERS

TS series oval gear positive displacement precision meters offer weights and measures accuracy for fluid custody transfer. The patented “Wave Form” oval gear design provides smooth and accurate operation in the meters only two parts. Refer to Precision Meter Technical Manual or Precision Meter Price book for a complete list of options.

SPECIFICATIONS

CAPACITY WITH STANDARD LV ROTORS STANDARD 5:1 TURN-DOWN INDUSTRIAL 10:1 TURNDOWN	
To 1500 SSU visc. (300cP)	60 gpm (230 lpm)

PRESSURE RATING	
Meter	150 PSI at 100°F = 10 BAR at 40°C

TEMPERATURE RATING	
Meter	-15°F to +180°F = -26°C to +80°C
MID Approval	-13°F to +131°F = -25°C to +55°C

VISCOSITY	
With LV rotors	100% capacity to 1,500 SSU (300 cP)
With HV rotors	100% capacity to 5,000 SSU (1000 cP)

CONNECTIONS	
Standard	1 ½" Bolted companion flanges with NPT or BSP port.
Optional	Bolted welding flanges
	Bolted 150# RF ANSI adaptors, carbon steel


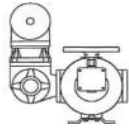
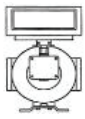
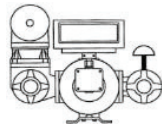
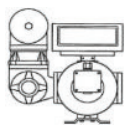
PULSE OPTIONS	
Raw Pulse	
100 Pulses Per Gallon	
10 Pulses Per Liter	

MATERIALS	
Case	Anodized aluminum
Gears	PPS with carbon bearings PTFE bearings opt.
Posts	Hard chromed stainless steel
Seals	Viton™ standard, PTFE optional
Flanges	Anodized aluminum std. carbon steel optional

MEASUREMENT APPROVALS	
NTEP	99-210
MID	GB-1366
	TC8183
Measurement Canada	AV-2360

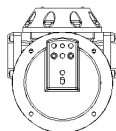
SAFETY APPROVALS	
Electronics Enclosure	Flame proof/explosion proof enclosure for use in a hazardous location Class I, Division 1, Zone 1. Intertek approved (ETL) US and Canada.
SCL	Telemetry equipment for use in Hazardous Locations, Class 1, Division 1, Group D for US. UL approved.
TBB	Intrinsically Safe Apparatus for Class I, II and III, Division 1 for US and Canada. Intertek Approved (ETL) US and Canada.
CE, ATEX	Excludes Electronics

MODEL NUMBER SPECIFICATIONS

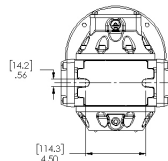
TS	Series							
15	Size	Nominal Capacity	GPM	GPH	lpm	m³/h		
	1½"	40 mm	60	3,600	230	14		
A	Anodized Aluminum Material							
Assembly Number	F14	F16	F64	F63	F66			
								
	Meter Only - Calibrator, RAD Adaptor, Ratio Gear Plate & Register	Register Flange (Register Ready), Strainer & Air Eliminator	Meter Only - with EMR3 Register	Meter, EMR3 Register, Strainer, Air Eliminator, & Solenoid Preset Valve	Meter, EMR3 Register, Strainer & Air Eliminator			
Flange	A		B		C			
	NPT		BSP		150# ANSI Adaptors			
Rotors & Seals	Seals	A	V	B	D	H		
	Rotors	Viton	Viton	PTFE	PTFE	PTFE		
	Bearings	LV	HV	LV	HV	HV		
		PPS/Carbon	PPS/Carbon	PPS/Carbon	PPS/Carbon	PPS/PTFE		
Signal Conditions	Volt	1	4	T	G	L	H	K
		EMR3	MID:COM	5-24	5-12	5-12	24	24
		TBB	TBB	TBB -1768 PPG	100 PPG SCL	10 PPL SCL	100 PPG SCL	10 PPL SCL
ATEX Gland	A							
	Atex Gland							
Languages	E		S		X			
	English		Spanish		Not Applicable			

TS15AF14

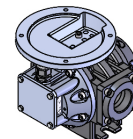
Top View



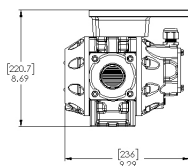
Bottom View



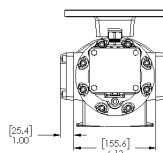
Angle View



L-Side View



Front View



R-Side View

